



# **IMPACT OF THE The Panama Canal Expansion Program WELCOME**



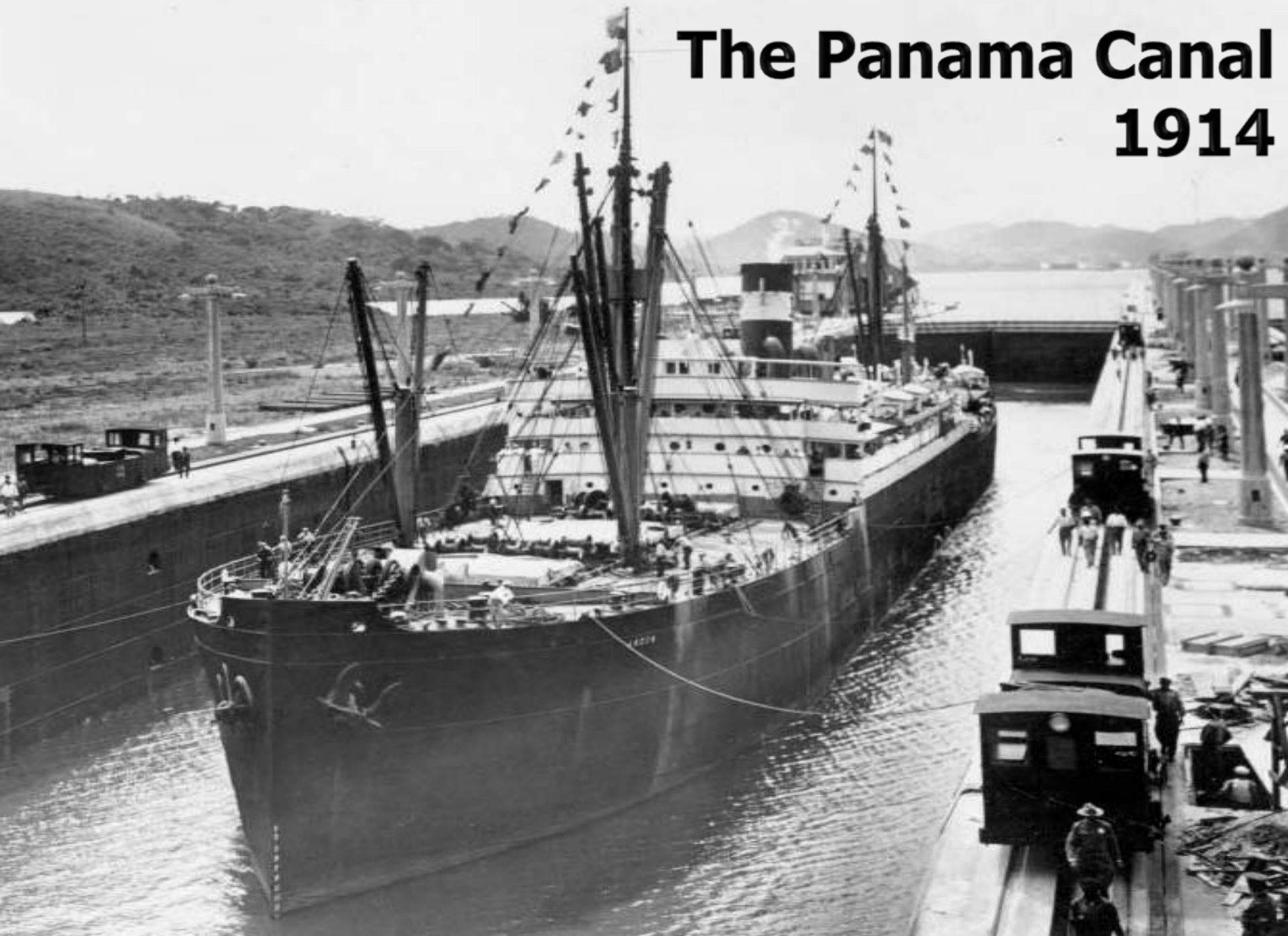
# Panama – Logistic Center of the Americas

*Reaching the full potential of its geographical position*





# The Panama Canal 1914



# The Panama Canal Today





# Performance – Fiscal Year 2012

## Operational Results

	FY2011	FY2012
Transits	14,684	14,544
Tonnage (PC/UMS millions tons)	322	333.7
Canal Water Time (hrs)	26.7	25.66



## Financial Results (USD millions)

	2000	2012	Var	Var %
Revenues	769	2,411	1,642	213.5%
Expenses	419	669	250	59.7%

# Main Routes- AF 2012



**Total: 218.1 M (Long Tons)**

**East Coast US - Asia**

**84.3M**

**West Coast South America - East Coast US**

**27.6M**

**West Coast South America - Europe**

**14.4M**

**West Coast US - Europe**

**9.7M**

**West Coast Central America - East Coast US**

**12.2M**

# The Panama Canal Main Users

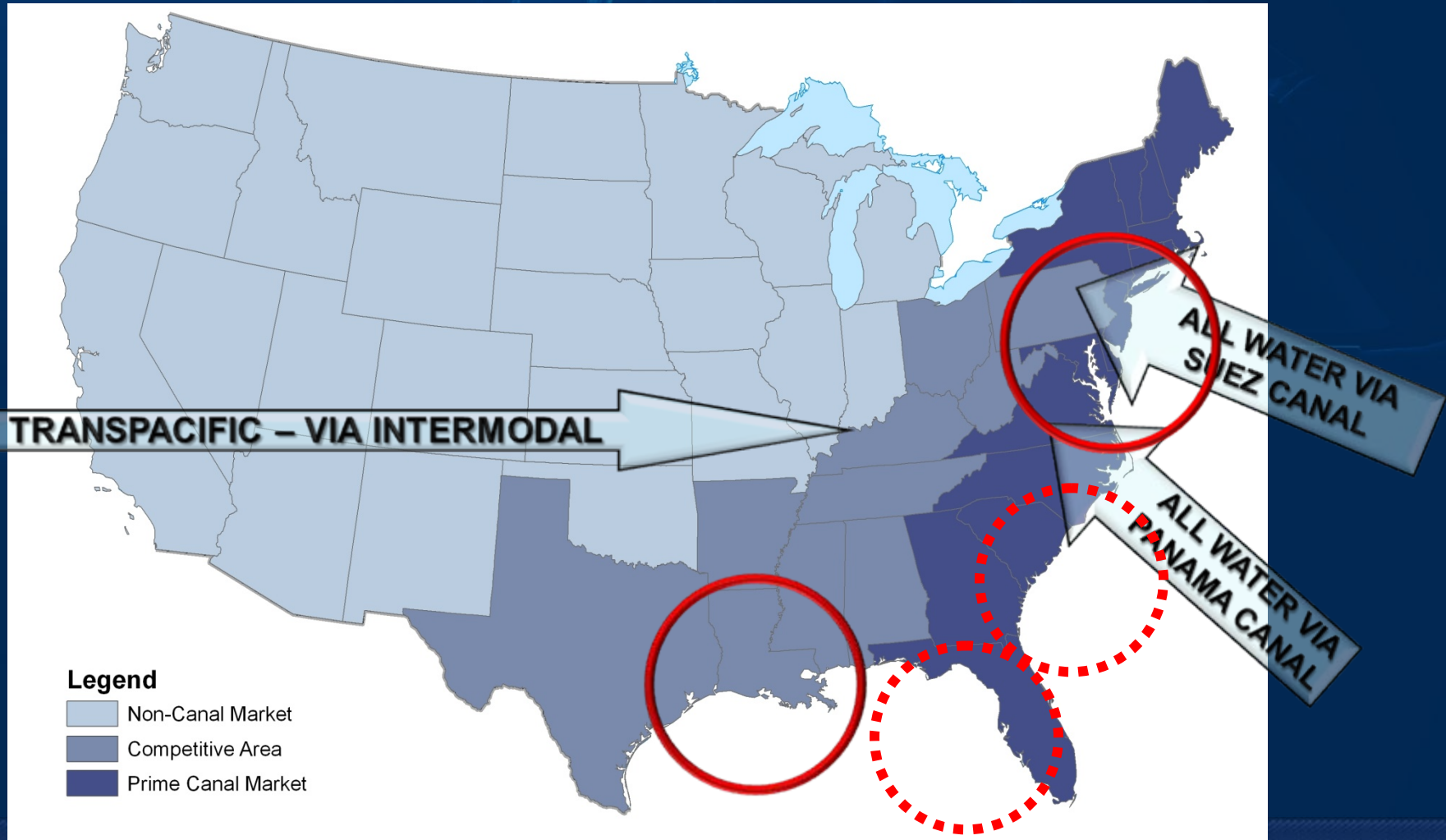
Cargo Movement FY-2012 (Preliminary)

USERS	FY 2011*	FY 2012*	2012 (%)
United States	144.4	141.9	65
China	53.1	52.7	24
Chile	28.9	28.0	13
Japan	22.6	22.4	10
European Union	24.2	17.5	9
South Korea	19.1	17.0	8
Colombia	14.6	14.9	7

**65% of  
Canal  
cargo  
traffic  
originates  
in or is  
destined  
to the  
United  
States**

\* Measured in Million Long Tons

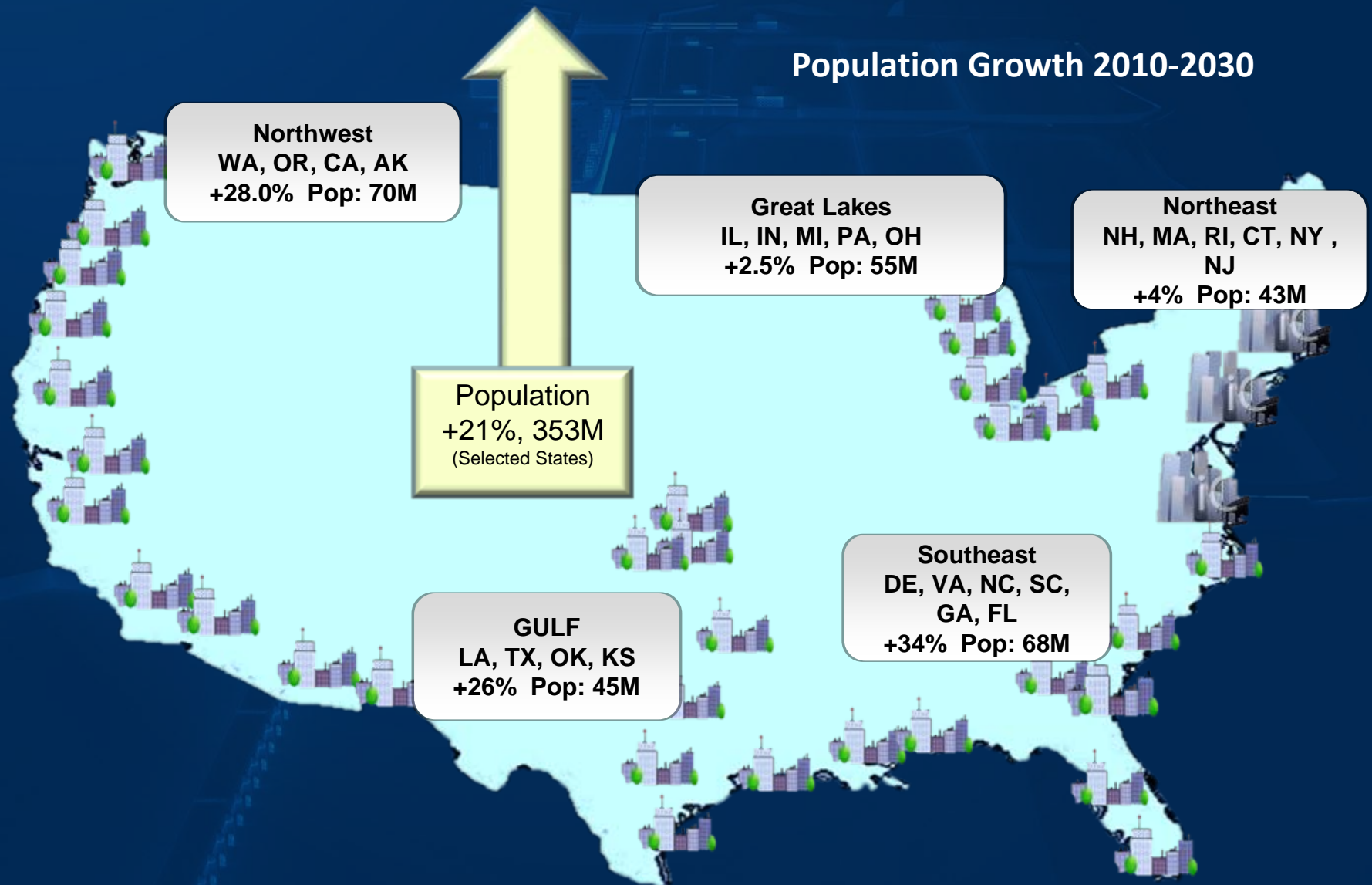
# West Coast and Panama Canal Routes are the most competitive in the USA





# US: Demand Drivers

## Population Growth 2010-2030



# LATIN AMERICA: Demand Drivers

## Population Growth 2010-2030

**Mexico +18.9%**  
**Pop: 135M**

**Caribbean, Cuba, Puerto Rico,  
Dominican Republic, Jamaica, Haiti  
+11.0%**  
**Pop: 42M**

**Guatemala, El Salvador,  
Belize, Honduras,  
Nicaragua. +28.0%**  
**Pop: 19M**

**Colombia, Venezuela  
+22.0%**  
**Pop: 88M**

**Ecuador, Peru,  
Bolivia, Chile  
+20.0%**  
**Pop: 85M**

**Uruguay, Paraguay,  
Brazil, +18.0%**  
**Pop: 251M**

**Argentina, +17.0%**  
**Pop: 48M**

**POPULATION**  
**+19%, 700M**  
(Selected Countries)



# US PORTS PREPARING THEIR STRUCTURES FOR THE PANAMA CANAL EXPANSION



# US Ports Expansion Rehabilitation Projects related to the Panama Canal Expansion Program

Location	Project	Estimated Completion Date
Georgia Ports Authority	Deepening River draft from 42' to 48'.	2014
Port of Miami	Deepening from 42' to 50' and Tunnel.	2014
Philadelphia Regional Port Authority	Deepening River draft from 40' to 45'.	5 – 7 years
Port Authority of New York & New Jersey	Deepening port area to 50'	2010 to 2014.
Houston Port Authority	Container Terminal and Cruise ship to 2.3 MTEU	15-20 years
Port Everglades	Cruise Ships Terminal No. 18 (mega-ships)	Nov. 2009
Port of Palm Beach	Logistical Center for Storage and Distribution of Cargo for South Florida	To be Determined
Jacksonville Port Authority	Container Terminal, additional capacity of 1.5 M TEU	2011 - 2012
Maryland Ports Administration	Seagirt Terminal, Baltimore. New 50' dock	2012



# US Ports Expansion Rehabilitation Projects related to the Panama Canal Expansion Program

Location	Project	Estimated Completion Date
<b>Tampa Port Authority</b>	Improve the port facility for containers and expansion of the terminal from 25 to 40 acres. Estimated Cost \$31M.	2014
<b>Mississippi State Port Authority (Port of Gulfport)</b>	Terminal additional capacity from 200 M TEU to 700 M TEU and improvements to the railroad conexions	2020
<b>Manatee County Port Authority</b>	Multimodal Logistic Park of 788.	2011
<b>Alabama State Port Authority</b>	Transfer of Containers installation Of Garrows Bend + connections to the railroad route to the Middle West of the USA .	To Be Determined
<b>Port of Los Angeles</b>	Access channel Deepening to 16.15 mts.	In Progress
<b>Port of Tacoma</b>	New Container Terminal for \$1,000 M Includes access to highways, railroads and public service infraestuctures. Also includes a canal expansion to the port.	2012

# Short Sea Shipping Network

**EAST-WEST POST-PANAMAX MOVEMENT**

**CONNECTING PORTS**

MANZANILLO  
LAZARO CARDENAS  
ACAPULCO  
SALINACRUZ  
SAN JOSE  
PUERTO QUETZAL  
ACAJUTLA  
LA LIBERTAD  
CORINTO  
PUERTO SANDINO  
PUNTARENAS  
CALDERA  
GOLFITO  
PUERTO ARMUELLES  
BALBOA  
BUENAVENTURA  
TUMACO  
ESMERALDAS  
GUAYAQUIL  
PAITA  
CALLAO  
ANTOFAGASTA  
VENTANAS  
VALPARAISO  
SAN ANTONIO  
TALCAHUANO

TAMPICO  
VERACRUZ  
COATZACUALCOS  
BELICE CITY  
PUERTO CORTES  
PUERTO CASTILLA  
PUERTO CABEZAS  
EL BLUFF  
PUERTO LIMON  
CHIRQUI BRANDE  
CRISTOBAL-MIT-EVERGREEN  
CARTAGENA  
BARRANQUILLA  
PUERTO BOLIVAR  
PUERTO CABELLO  
LA GUAIRA  
SUAP / PCEM  
RECIFE







# The Panama Canal - 2015



It's all about economies of scale!





# **The Panama Canal Expansion Program**

**Thank You Very Much !!!**

