

# The Large Marine Ecosystem (LME) Governance Framework as a model for the Wider Caribbean Region

Lucia Fanning<sup>1</sup>, Robin Mahon<sup>2</sup>, Patrick McConney<sup>2</sup>

<sup>1</sup> Marine Affairs Program, Dalhousie University  
Halifax, Nova Scotia, Canada

<sup>2</sup>Centre for Resource Management and Environmental Studies  
The University of the West Indies, Barbados

*Building a science-policy interface for ocean governance  
in the Wider Caribbean*

**Association of Caribbean States - Caribbean Sea Commission**

**Expert Consultation on Operationalisation of the Caribbean Sea Commission**

University of the West Indies, Cave Hill Campus, Barbados, July 7-9, 2010

# Format

- Terminology
- Why do we need a governance framework?
- What is its purpose?
- How should it be designed?

# Terminology

(Young 2008)

## **Governance:**

Process of steering or guiding societies towards socially desirable collective outcomes and away from those that are undesirable

## **Institution:**

A cluster of rights, rules and decision-making procedures that give rise to social practice, assigns roles and responsibilities and guides interactions among the occupants of the roles

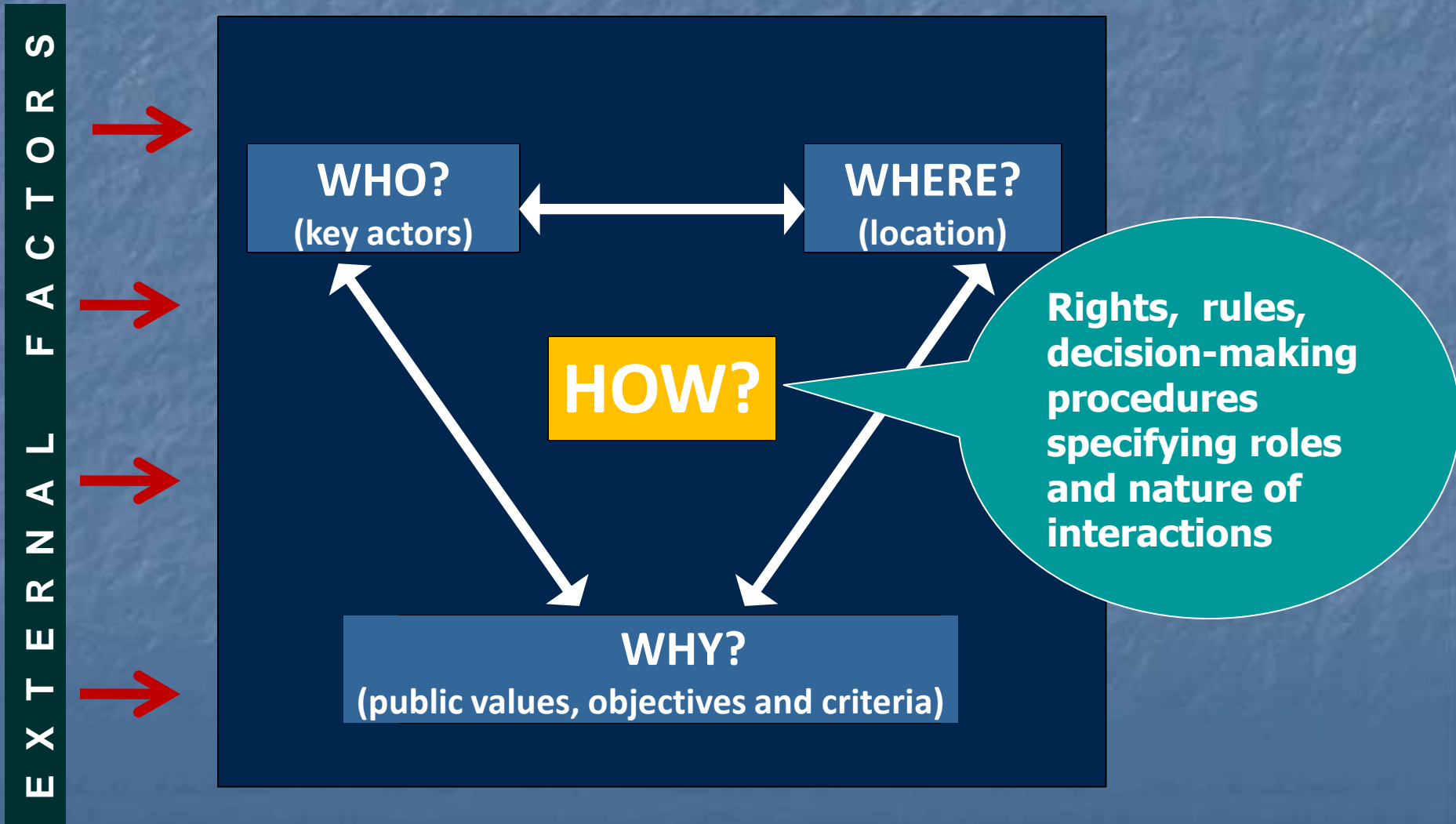
## **Governance system:**

An institutional arrangement (formal and informal) created to perform the function of governance with regard to a specific society and a specific issue(s).

## **Organisation:**

An entity responsible for administering rights, rules and decision-making procedures, i.e. members share a common purpose

# Context-Driven Elements of the Decision-Making Process



# Factors affecting quality of decision-making outcomes – 4 P's

- Identification of the nature of the problem and understanding of it by the key players (organizations and individuals);
- Assessment of the politics, political structures and policies causing and affecting the implementation of possible solutions to the problem;
- Level of information gathering on the characteristics of the players and the motivation behind their possible exercise of influence; and,
- Assessment of current practices and metapractices that can affect possible solutions.



# Why do we need an effective LME governance framework?

- **Human-dominated Ecosystems**
  - Coastal development
  - Pollution
  - Over-exploitation
  - Climate change
- **Institutions serve as a major determinant in advancing key principles**
  - Equity
  - Efficiency
  - Sustainability



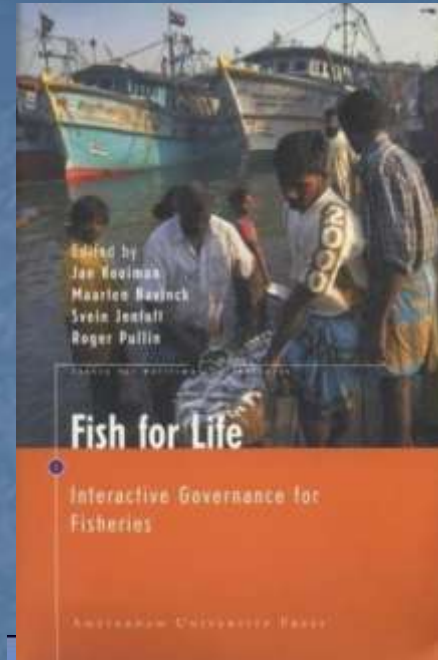
# Issues of large scale and complexity in the Wider Caribbean

- Lots of technical work has been done
- Has little impact on governance
- Many local efforts at management
- Uncoordinated and disconnected at regional level
- Duplication of effort

# What is its purpose?

## To address 3 interrelated orders of human activities in the Caribbean Sea:

- **Problem solving** or day-to-day management of a particular issue that has been identified
- **The institutional frameworks and arrangements** in place for solving problems associated with the issue
- **Overarching meta-governance**, which is about the principles and values that underlie the institutional frameworks.



## Towards Principled Oceans Governance

Australian and Canadian approaches and challenges

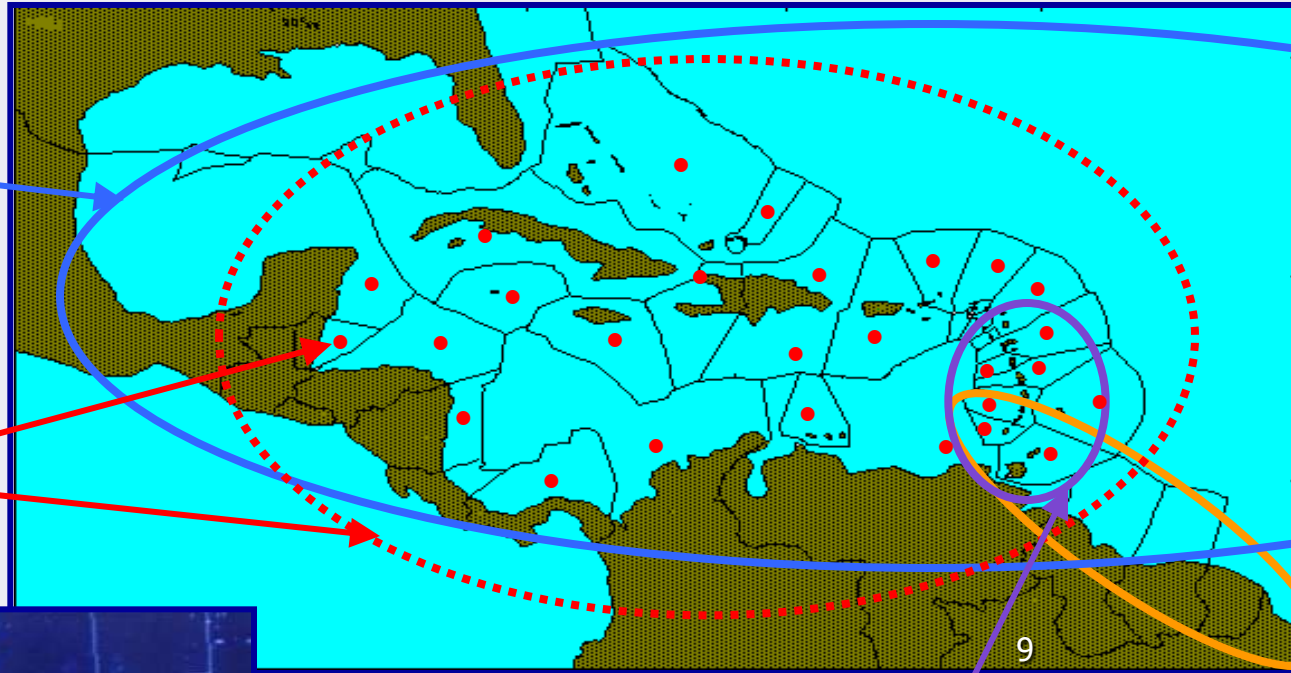
Edited by Donald R. Rothwell and David L. VanderZwaag



# Natural resource scale

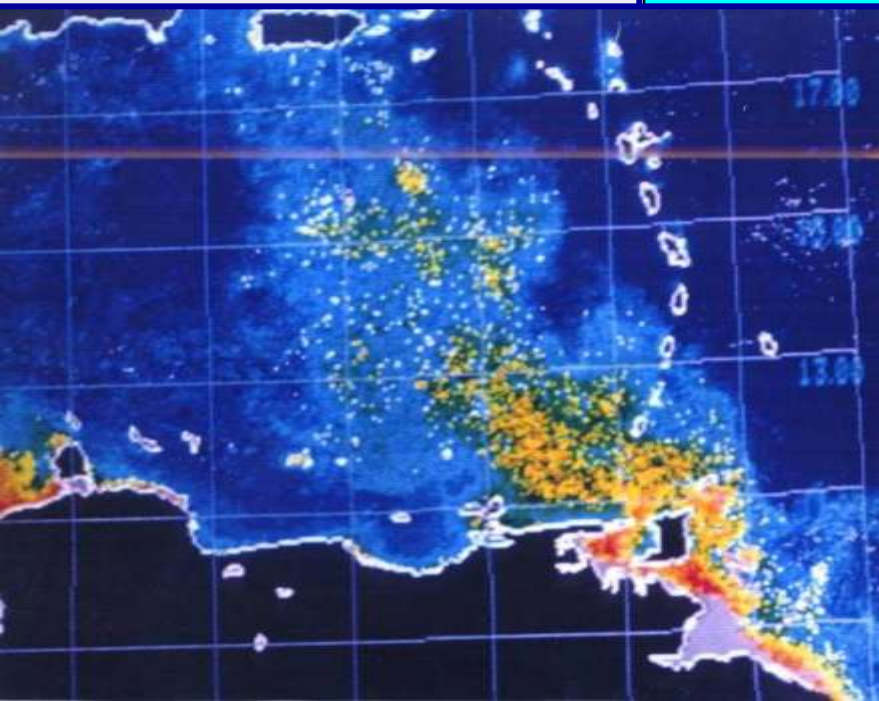
Large pelagics

Reef fishes



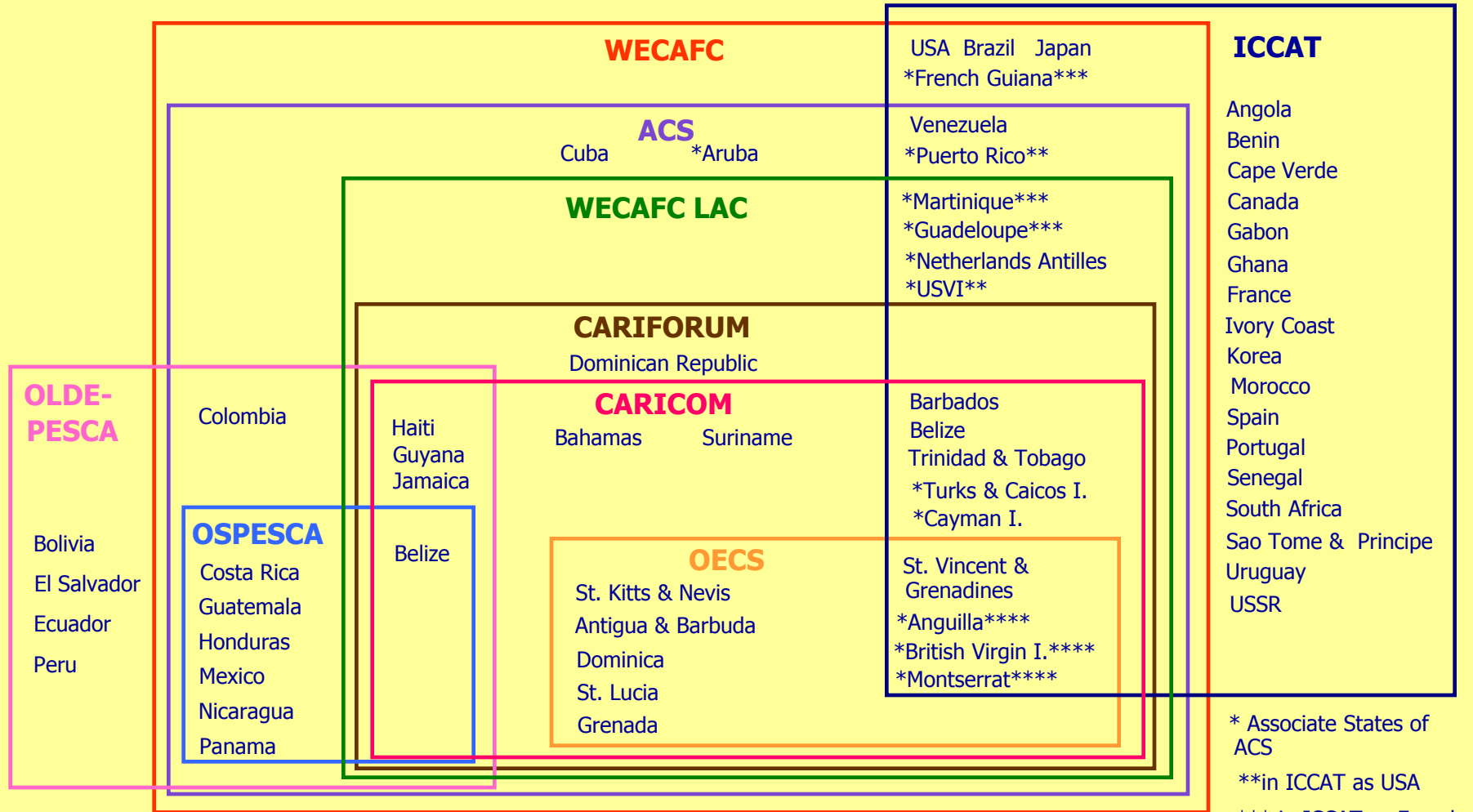
Flyingfish

Shrimps



# Institutional Scale

## Overlapping and nested fisheries related organisations



\* Associate States of ACS

\*\*in ICCAT as USA

\*\*\* in ICCAT as French Departments

\*\*\*\* in ICCAT as UK

# Desired Design Characteristics

**LME governance framework must embody some key properties as “one size does not fit all”:**

- **Scale** - both geographical scale and institutional scale;
- **Context** – co-occurring of different types of context-specific governance interactions and processes;
- **Evaluative** - different scale and process appropriate indicators can be used in different parts of the framework; and,
- **Adaptive** - processes must be iterative on time scales that are appropriate to adaptation and learning.

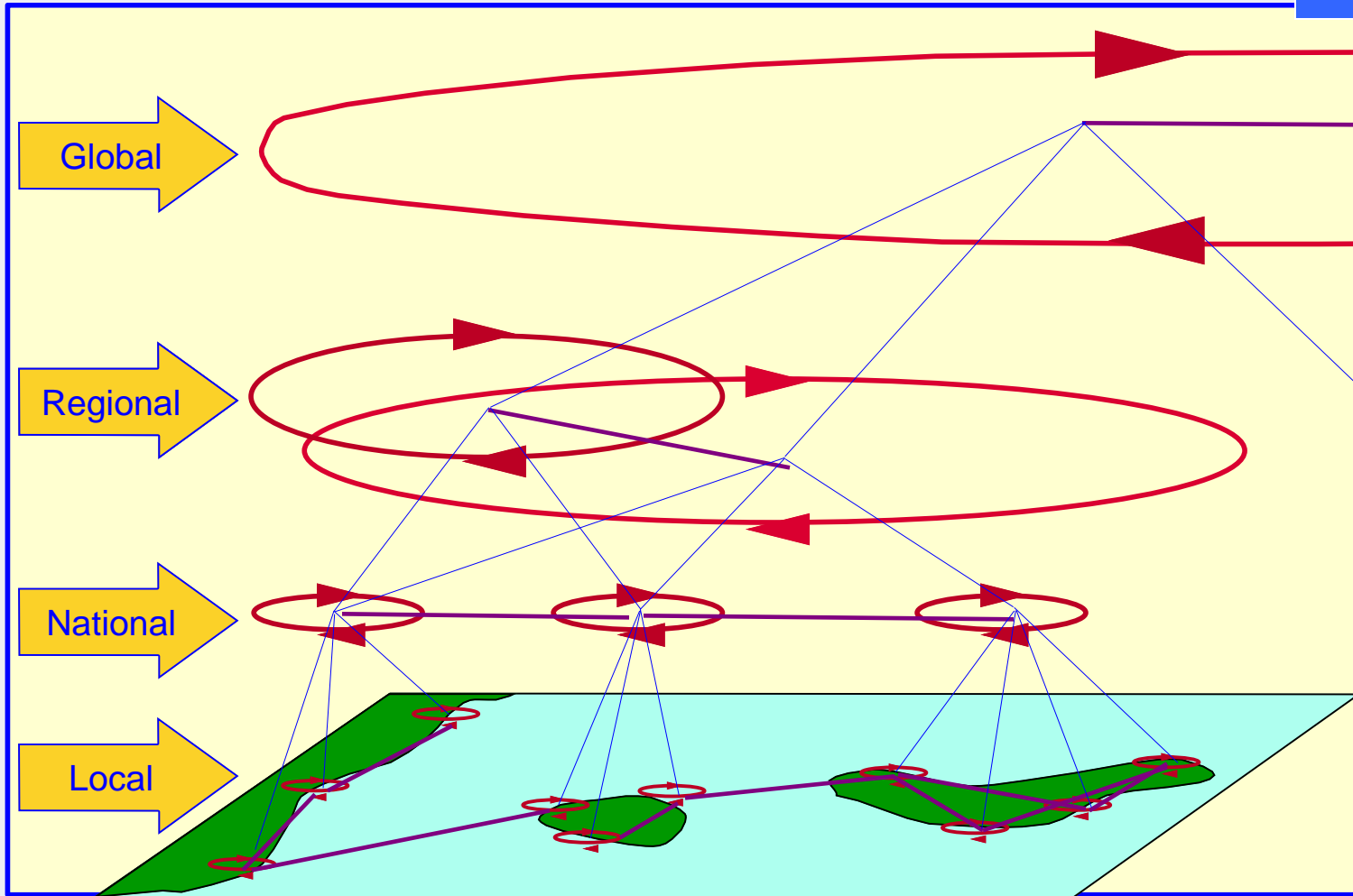
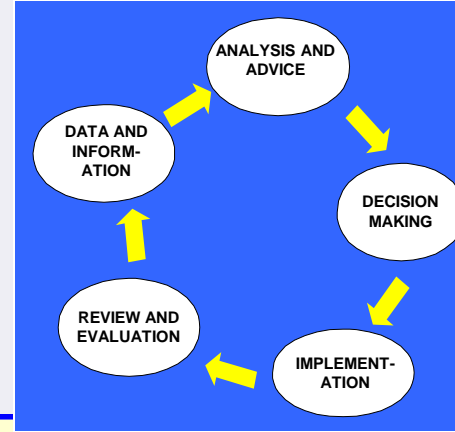
# Intervention Requirements of the Framework

- It must help to identify and reform institutions that are 'misfits' and unable to accommodate systems that are highly dynamic, multi-level and subject to a high degree of uncertainty;
- It must accommodate the interplay that necessarily exist between one set of institutional arrangements that exists for a given set of issues and another; and,
- It must allow for scaling to be used as a means to address equity concerns and to facilitate effort at all appropriate levels to solve problems.



# The LME Governance Framework

A multi-level policy-cycle based governance framework

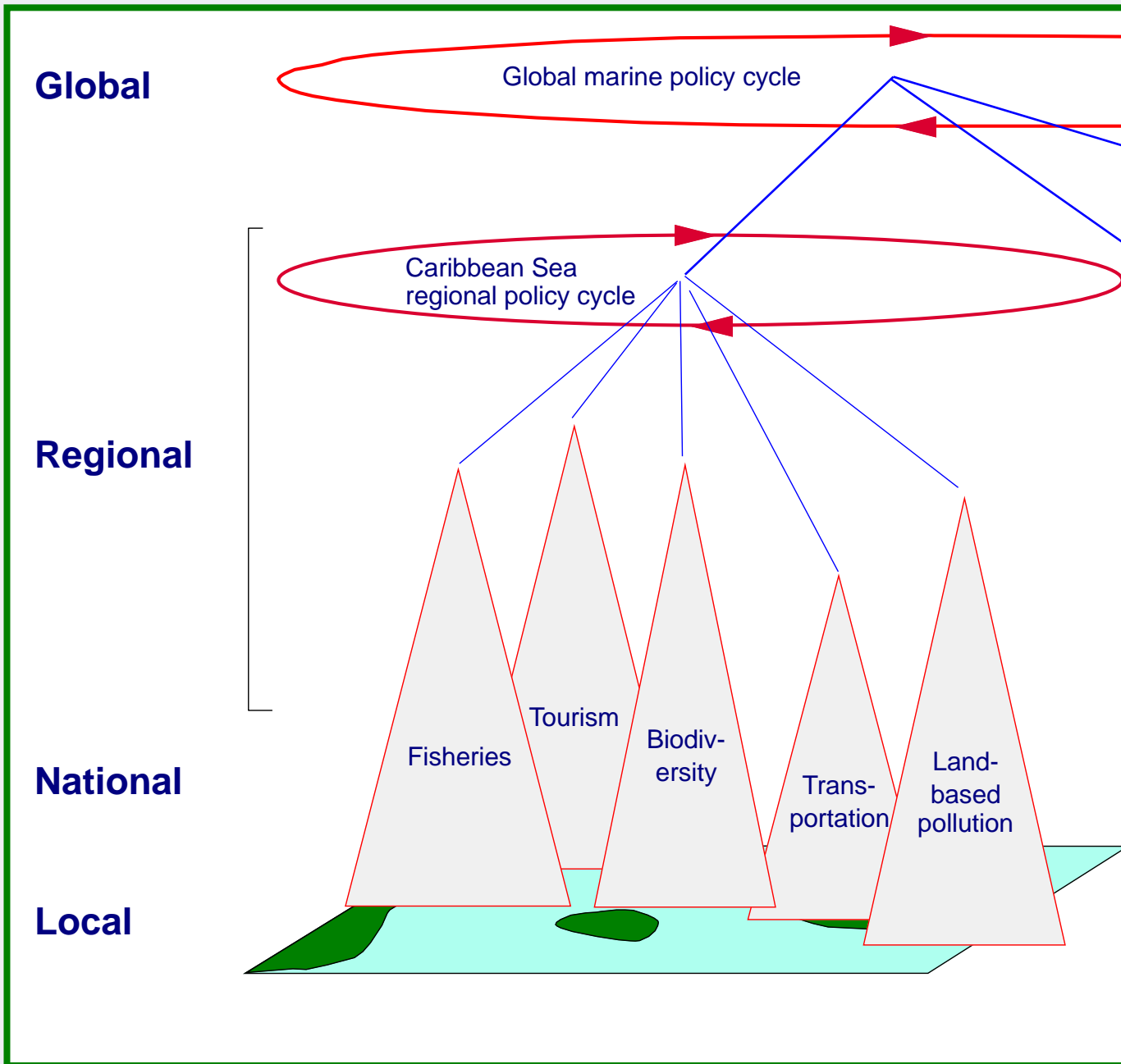


**Must be:**

- Complete
- Linked vertically
- Linked laterally

Diversity of cycles

# LME Governance Framework



# Governance framework diagnostic and priority-setting/interventionist advantages

## Governance framework provides:

- Way for those involved at all levels to see where they fit in;
- Way to break the problem into manageable units through diagnosis;
- Targeted interventions to establish and/or enhance specific parts of the framework

# Building the LME Governance Framework

## “Learning by doing”

### Long-term goal

**Fully-functional policy cycles at all appropriate levels with the appropriate vertical and lateral linkages.**

### Framework building interventions

- Interventions can be:
  - Approached incrementally by targeting deficient areas
  - Specifically targeted at:
    1. Establishing or completing policy cycles
    2. Building or enhancing linkages